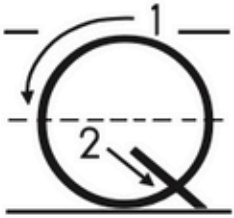


# Write the Letter

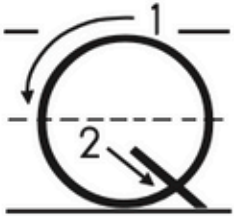
Follow the arrows to practice this letter!



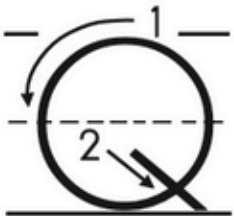
QUESTION MARK



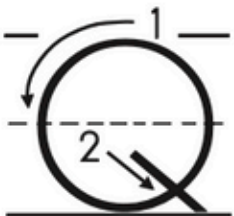
Handwriting practice lines (solid top and bottom, dashed middle) for writing the question mark.



Handwriting practice lines (solid top and bottom, dashed middle) for writing the question mark.



Handwriting practice lines (solid top and bottom, dashed middle) for writing the question mark.



Handwriting practice lines (solid top and bottom, dashed middle) for writing the question mark.

